



MOR-GRAN-SOU
ELECTRIC COOPERATIVE

Serving Morton, Grant and Sioux counties

THIS ISSUE:

- Beyond kilowatts
- Co-op updates infrastructure
- Have a safe harvest
- Board minutes

AUGUST
2024

Your Touchstone Energy® Cooperative 

EMPOWERING RURAL YOUTH: Blend explores Washington, D.C.



Lucy Blend, left, represented Mor-Gran-Sou Electric Cooperative on the Youth Tour this summer.



YOUTH TOUR:

Blend explores Washington, D.C.

Each June, hundreds of high school students gather in Washington, D.C., for an opportunity to learn more about electric cooperatives and cultivate lifelong friendships and memories.

Mor-Gran-Sou Electric Cooperative holds an annual contest for high school sophomores or juniors to be chosen to attend the Electric Cooperative Youth Tour. Students enter the contest by writing an essay in response to a question posed by the cooperative.

Lucy Blend from New Salem joined other North Dakota youth sponsored by their local electric cooperatives, along with students from around the nation, in Washington, D.C., for a week of learning and networking.

An eye-opening experience

Sixteen North Dakota youth gathered before the trip at the North Dakota Association of Rural Electric Cooperatives headquarters in Mandan for some team building before taking off to Washington, D.C. The group was able to review the itinerary and gather T-shirts for the week. The group left on Saturday and returned late Friday night. Each day included new learning experiences and sights to see.

Once the plane landed, the students were off to their first stop: Ford's Theatre. Later in the week, students partook in a Co-op 101 and youth advocacy course. The group was able to see much of Washington, D.C., by touring museums, national monuments, memorials and more. They also attended other activities, such as a riverboat cruise, a Medieval Times tournament and a Washington Nationals baseball game.

The days were packed full of learning about electric cooperatives and sightseeing.

"Researching for the Youth Tour essay question really got me excited for this trip," Blend says. She noted some of her highlights were exploring Gettysburg, as she memorized the Gettysburg Address for school, and the Martin Luther King Jr. Memorial. Due to the smaller size of the North Dakota group, they were able to experience more sites, such as the FBI Museum and Mt. Vernon.


Blend will be a senior this school year and is active in her homeschool community and church. She enjoys helping teach the younger children as they are our future, she notes. Blend says she will use her experience from the Youth Tour to encourage youth younger than her and her peers

to do difficult tasks and to get outside of their comfort zone.

"We are the future and I think we have a lot more potential than people expect of us," Blend says. "This trip urged me to get more involved in my community as well as grassroots efforts in our state."

As Blend reflects on her experiences in Washington, D.C., she urges everyone to apply.

"It is definitely worth the effort. It was an amazing trip," Blend says.

More information regarding the 2025 Youth Tour will be shared in the coming months. Watch for future issues of *North Dakota Living* and visit our social media. 



Lucy Blend, right, encourages others to apply for the Youth Tour.

MANAGER'S MESSAGE: **Beyond kilowatts**



Jason Bentz

Today, I want to take a moment to discuss an essential aspect of our cooperative's operations: base rates. A few members expressed concern about these rates in our recent member satisfaction survey, and I wanted to take the time to explain them a little more.

Base rates, which are the foundation of our rate structure, play a pivotal role in ensuring the financial sustainability and operational integrity of our cooperative. These rates represent the fixed costs associated with maintaining and operating the infrastructure necessary to deliver electricity to your doorstep, regardless of the amount of energy consumed.

It's important to understand base rates encompass more than just the cost of electricity generation. They also cover a myriad of other expenses, including transmission and distribution infrastructure, equipment maintenance, grid modernization initiatives and compliance with regulatory requirements. These investments are essential for maintaining a reliable and resilient electric system that meets the evolving needs of our members.

Mor-Gran-Sou Electric Cooperative takes great care in setting our base rates to balance the needs of our members with the financial obligations of our cooperative. Our goal is to ensure rates remain fair, transparent and reflective of the true cost of service, while also promoting affordability and accessibility for all members, regardless of their energy usage.


However, it's essential to recognize our

cooperative is more than just a utility provider of kilowatt-hours. We are stewards of an essential service that powers the homes, farms and businesses that form the backbone of our communities.

We are a community partner dedicated to enhancing the quality of life for our members and fostering economic prosperity in our service area. From supporting local initiatives and charitable causes to providing energy efficiency programs and educational opportunities, we strive to make a positive impact on the communities we serve.

Moreover, cooperatives like ours are uniquely positioned to serve areas for-profit utilities may overlook due to economic considerations, such as the challenges associated with fewer members per mile of line. Unlike investor-owned utilities, which prioritize profitability, cooperatives are driven by a commitment to serving all members of our community, regardless of geographic location or population density.

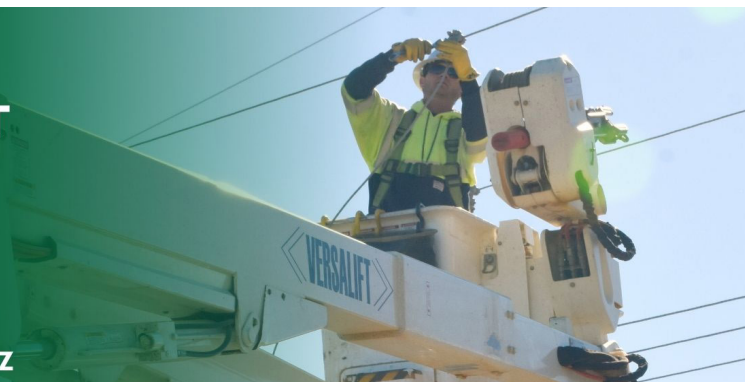
As we navigate the complexities of setting rates and financial management, it's crucial to remember our cooperative is rooted in the principles of cooperation, democracy and member ownership. Your input and participation are invaluable as we work together to shape the future of our cooperative and ensure it remains a beacon of service and integrity for generations to come.

Thank you for your continued support and trust in Mor-Gran-Sou Electric. Together, we are more than just selling kilowatts. We are providing an essential service that powers the vitality and resilience of our communities. 



**"WE ARE PROVIDING AN
ESSENTIAL SERVICE THAT
POWERS THE VITALITY
AND RESILIENCE OF OUR
COMMUNITIES."**

CO-GENERAL MANAGER/CEO, JASON BENTZ





ENSURING RELIABILITY: Co-op updates infrastructure

Mor-Gran-Sou Electric Cooperative is dedicated to ensuring safe, reliable energy for its members. One avenue to ensure reliability and efficiency has been upgrading technology. Within the past year, Mor-Gran-Sou Electric has been upgrading sectionalizing technology across its service area with TripSavers.

A TripSaver acts like a breaker in your home. When an outage occurs, it takes out the faulted area versus taking out the whole system. If the TripSaver is unsuccessful in the reclosure, it drops open, making it easier for line crews to locate a fault on the line.


Switching a system to different technology is not an easy task and one in which Mor-Gran-Sou Electric took time and deliberation.

TripSavers are an affordable option when it comes to sectionalizing equipment for the electric grid.

“Unlike our current oil circuit reclosers, TripSavers require little to no maintenance, saving the cooperative thousands of dollars every year as well as unnecessary trips for our line crews,” says Manager of Operations Gary Fitterer.

You may see TripSavers mounted on power poles. These devices are programmable, increasing the accuracy of an issue by opening the line at the correct location. This alleviates unnecessary road time for the line crew and helps shorten the restoration time.

“We look forward to implementing this technology across our service territory to help ensure reliability to our members’ homes and businesses,” Fitterer says.

As Mor-Gran-Sou Electric continues to work on installing TripSavers and other projects around the area, please don’t hesitate to call the office with any questions or if you come across electrical equipment that looks unsafe. 



SAFETY STARTS WITH ME: Safe harvest

Agriculture is the backbone of our country, and our livelihood greatly depends on the crops produced by North Dakota farmers. In addition to being one of the most labor-intensive professions, farming is also considered one of the most dangerous jobs in the United States.

The hard work and exhaustive labor are tough, but rushing the job to save time can be extremely dangerous – even deadly – when farming near electrical equipment.

“Every year, farm-related accidents happen when combines and other farming equipment collide with utility poles and power lines, causing injuries and power outages,” says Engineering Technician Jesse Kuhn.


Here is what YOU can do

These dangerous accidents can be avoided by looking up and around your surroundings when operating large farm machinery. If you’re preparing for harvest season, please keep the following safety tips in mind:

- Maintain a 10-foot clearance around all utility equipment in all directions.
- Use a spotter and deployed flags to maintain safe distances from power lines and other electrical equipment when working in the field.
- If your equipment contacts an energized or downed power line, call 911 immediately. Stay inside the vehicle until the power line is de-energized. If there is smoke or fire, exit by jumping clear of the cab without touching the equipment and hop away to safety. We also urge you to contact your electric cooperative for



- additional assistance.
- Consider equipment and cargo extensions of your vehicle. Lumber, hay, tree limbs, irrigation pipes and even bulk materials can conduct electricity, so keep them out of contact with electrical equipment.

We hope you never find yourself in a situation where farming equipment contacts power lines or poles, but we hope you’ll remember these safety tips. If you see something while out in the field that needs our attention, please call the office as soon as possible. 

TIPS FOR SAFE HARVEST

- Keep all equipment at least 10 feet away from power lines.
- Never try to raise or move a power line to clear a path
- Power line sagging? Don’t move it. Call us immediately.





Unclaimed capital credits

The following list contains the names of current or former Mor-Gran-Sou Electric Cooperative members who had unclaimed capital credit checks mailed in December 2023.

These checks have either been received, but not cashed, or returned to Mor-Gran-Sou Electric by the postal service, because it could not locate the members at the address on file. A further search by Mor-Gran-Sou Electric personnel has not turned up their whereabouts. If you know of the whereabouts

of members on this list, please have them contact Mor-Gran-Sou Electric at 800-750-8212, 701-663-0297 or 701-597-3301. Please keep in mind not all of the capital credit amounts are large, but we would like to get these checks to the proper parties. Persons who wish to claim checks from the following list should be prepared to provide proper personal identification.

These are unclaimed capital credits as of July 18.

JAYME ACKERMAN
AG ENTERPRISES
SARA ALYEA
DUSTIN AMERICAN HORSE
MARTY AMSBAUGH
SCOTT AMUNDSON
DEAN ANDERSON
ANDREW ANTELL
ARROW W. FAMILY LLP
LEO AUNE
AUTO BODY SPECIALIST
PLUS INC.
WADE M. BACHMEIER
RICHARD W. BAHR
PHILLIP BAIRD
ROBERT BALZER
ELIZABETH BARNHARDT
JON BARNHARDT
CARISA BAUER
FRANCIS BAUER
JAMES J. BAUER
JENNIFER BAUER
CHRIS BAUMAN
LAURA BEATTIE
LARRY BECKER
BEHREN'S AG CONSULTING
DOUGLAS BENDER
LILLIAN BENOIST
DARREN BERGER
JENNIFER BERGER
ROBERT BILLINGS
MARCIA BLOTSKY
JOSHUA BOEHM
KEITH BOEHM
RICHARD BOHL
THOMAS BOHN
JOEL BOSWORTH
SAZHIDA BOWLES
HANS BRADLEY
KARRIE BRAVE BULL
ROGER BRENNEISE
ZACH BREW
CURTIS BRILZ
HERBERT BRUINGTON
KELLY BRYAN
JONNY BUCHHOLZ

WAYLON BUECHLER
SCOTT BULLINGER
BUREAU OF RECLAMATION
JOHN "BOB" R. CARANICAS
ROBERT CAROLIN
CARSON WILDLIFE CLUB
RYAN CAYA
JOHN W. CHARVAT
LUKE CLAUSEN
CLINT FELAND INC.
STEPHEN CONMY
EMILY CONNOR
MICHAEL K. CROW
FEATHER
MARK CUBA
JOHN DAILY
DREW DANGERUD
LORRAINE DAVIS
ROBERT W. DEMERY
WESLEY DOLL
RICHARD W. DUNCAN
THOMAS EAGLE
NATHANIEL ECKROTH
BROOKE EDWARDS
JOHN C. EHLIS
JEANNETTE ELSIE
JON ENGELSTAD
BONNIE S. ERETH
KARLA ERHARDT
BRENTT ESLINGER
SCOTT ETHEN
EXTEND AMERICA INC.
BRANDON FARIS
FARMERS UNION OIL CO.
FLASHER
TROY FERCHO
KENNETH R FERDERER
ANDY FIDRAM
FIRST BAPTIST CHURCH
NATHAN FISCHER
FLASHER FARMERS UNION
ELEVATOR
FLASHER FARMERS UNION
GRAIN & OIL
DEREK FLORY
ARCHIE FOOL BEAR


TODD FORD
FORT ABRAHAM LINCOLN
FOUNDATION
MATTHEW FRANK
JOHN FREDERICKS
JASON R. FREIDT
ROD FREIJE
AARON FRIESZ
ERIC W. FRIESZ
DON FRY
ELEANOR FUCHS
JACOB GAPPERT
GEORGE GARTNER
SCOTT GATES
ELEANOR B GATHRIGHT
DENNY GAYTON
SANDRA GAYTON
DAVID GECK
WILLIAM GEIGER
LANCE GERHARDT
MARTIN GIPP
MONTE GLASSER
COLE GLATT
VINCE GOETTLE
DAKOTA GOODHOUSE
GREGG GREENQUIST
BENJAMIN GRESS
PETER J. GRESS
MARK GREWATZ
DUSTIN GROVE
GREG GRUBE
CATHY GULLICKSON
VIVIAN GULLICKSON
GARDINE HAFF
MIKE HAGEROTT
BONITA HALVORSON
DERICK HANDLEY
JASON HARRIS
HARRIS CORPORATION,
CRITICAL NETWORK
MICHELLE HARRISON
SHELLIE HARRISON
ARIK HARSTAD
JOHN HART
ROCKY HART
WAYNE HATZENBUEHLER

CHAD HATZENBUEHLER
DAVID HAUCK
JORDAN HAUCK
RODNEY HAUGEN
HOWARD HAUSAUER
HEBRON WILDLIFE CLUB
CODY HEID
JENNIFER HEIDT
ALBERT HEINERT
ROBERT HEINZEN
WILLIAM HELBLING
JOHN M HELFRICH
GEORGE HELM
JENNIFER HELVIC
NATALIE HEMPHILL
RYNE HENDRICKSON
DALE HEPPER
STANLEY HERTEL,
DECEASED
HEATHER K. HERTZ
KRIS HICKMAN
KARISSA HILTON
MARJORIE HIMES
SHANE HIMMELSPACH
DEAN HOFF
JACK HOFSTAD
ETHAN HOGER
LORRAINE M. HUNTER
DITTUS INC.
INTERSTATE WESTERN
WORKS
BERNICE IRON EYES
MYRON JACOBSON
STEVEN JASKOVIK
KRISTINE A. JENSEN
BEVERLY JOHN
AARON JORGENSEN
SHANNON KALLEVIC
TIM KALLIS
ARNOLD A. KALLIS,
DECEASED
HEATHER KAPELLA
KENNETH KARY
BRAYDON KATUS
DOUGLAS H KAUTZMAN
EUNICE KEEPSEAGLE

DANA KELLER
KATHY KENNEDY
DARIN KENNEY
ELMER J. KETTERLING
RYAN KISER
JEFFERY KLEIN
DAVID B. KOCH
RANDY KOTTSICK
RANDY KOVAR
TERRY J. KRAFT
VERNON AND KELLY
KRAFT
DOUG KRAMER
JIM KRANCE
MARY A. KRAUSER
JASON KREIDT
FARON KRUEGER
AMY KRUGER
RYAN KUCHENSKI
DARRELL KUHN
DAVID A. KUNTZ
SHAD KUSLER
ANDREY KUTSIY
TARA LACHER
BILLY LACINA
RYAN LAGASSE
LAINTZ RANCH INC.
WAYNE LANG
VANESSA LANGE
TRACY LARSON
JACOB LEINGANG
JONATHAN LEONARD
ALICIA LEPP
ANTOINETTE LESTER
JULIE LINDSTROM
PATTY LOCKEN
JOHN H. LOERCH
GLENN LOHMANN
RAY LUDLUM
JODY LUGER
JACOB LUPTAK
PHYLLIS G. MACKAY
KENTON R. MAGILKE
KEITH MAPPES
GARY G. MARSHALL
TRAVIS MARTIN
MATTHEW A. MARTINEZ
ROSELYN MARTINEZ
YVETTE MATTHEWS
BEN MAUAI
SHAWN MAXON
CORNELIA MAYER
JEFF MCDOWALL
JES MCDOWELL
ROBERT W. MCLAUGHLIN
GERALD MESKE
LACEY MEYER
ASHLEIGH MILLER
KEVIN G. MILLER
LANCE MILLER
PATRICK W. MILLER
CORA L. MONSON
JADEN MOSER

LINDA S. MOSTAD
DERRICK MURPHY
VERNA NAGEL
SETH NEHL
RON NEIBAUER
MATTHEW NELSON
RANDALL NELSON
RICKY NELSON
RODNEY NELSON
NEW SALEM LIONS CLUB
STACY NEWBURGH
NORTHERN GREAT PLAINS
RESEARCH LAB
NORTHERN PLAIN
NATURAL GAS CO.
RYAN NYQUIST
NEIL OEDZES
MARVIN J. OLSON
TIM OLSON
LORI ONE HORN
JEROME OPPEGARD
ROBERT OSTER
JUSTIN OTTO
KENNY PAINTE JR.
JON PARKER
DANIEL J. PAUL
ROGER PEARSON
KURT PETERSON
LARAE PETERSON
MICHELLE PETERSON
CURTIS PETRICK
SHANNON PFLIGER
EVAN PFLIIGER
NORMAN PFLIIGER
MATTHEW PIEHL
PIPER JOHN EXPRESS INC.
GEOFFREY PITMAN
MICHAEL PITTMAN
GABE PLANTE
JEREMY PLEETS
THANE A. POPELKA
DANIEL POPPE
MR PROPERTIES
JONATHAN PUTNAM
CLAUDE T. RAMSEY JR.
DEVIN RANGEL
STANLEY L. RECH
JOYCLENE RED DOG
MATTHEW REINER
SUSAN REINHILLER
STEVEN RENSCH
GERALD M. RESSLER
MATT REUTER
PETRA REYNA
AMBER RIEPL
SARA RINAS
TRACY ROBERTSON
JOSHUA ROGERS
JOHN ROSENCRANS
CORDELL W. ROTH
LELANI RUNNING BEAR
STEPHEN RUSSELL
LEAH SALINAS

HANNAH SALVESON
RALPH SAMPILL
JAMES SANDLAND
ANDREW R. SANDLAND JR.
GARY SANDLAND JR.
CHRISTOPHER SCHAF
SUZETTE SCHAFFER
ALVIN SCHAFF
CLAYTON SCHAFF
VINCE SCHANANDORE
JOEY SCHANTZ
TERRY SCHANTZ
GEORGE SCHATZ
LINDA SCHAUER MORROW
JAMES SCHENATZKI
NICOLE SCHERR
ANTHONY SCHMIDT
ERIC SCHMIDT
RON SCHMIDT
STUART SCHMIDT
ROBERT SCHMITT
MICHAEL SCHOLES JR.
NATHAN SCHOONOVER
SUSAN C. SCHULZ
JON SCHWARTZMAN
DALE L. SERR
URBAN SILBERNAGEL
SHELLY SIMBURGER
SIOUX COUNTY SOCIAL
SERVICES
SKY & LAND LLC
JAMES SMITH-KOM
KENNETH SOKOLOSKI
SOLE COMMUNITY
YOUTH CENTER
MITCHELL SPINDLER
RANDY SPITZER
VICTOR SPRECHER
DYLAN ST. GERMAIN
MELANIE STAIGER
STANDING ROCK SIOUX
TRIBE
LEONA STEGMILLER
NORTHLAND STORAGE
SHANNON STRATING
MARLYS C. STUMPF
GEO D. SUMMERFIELD
KIM SWENSON
JUNE SZCZUR
DONALD L. TANAKA
DAN TENTIS
ALYSSA TEPPER
REBECCA J. TERNES
TAMMY THOMAS
ZACHARY THOMPSON
KENNETH TOKACH
WAYLON TOMAC
MYLINDA TROXEL
TRAVIS TWINN
CLAUDE ULRICH
KELLY URBANEC
LYLE USES ARROW JR.
LISA VALANDRA

SHAWN VENSTAD
JENNIFER VIVIER
MARK VOIGT
SHIRLEY VOIGT
BENNETT VOLK
DANIEL VOLK
MONTE VOLK
ROBBIE WAGNER
TYLER WAHUS
MARY BETH WALKER
WILLIAM B. WALKER
BOBBY WATSON
KATHY WATSON
LORRAINE WEBER
SHANNON WEIGELT
ALEXANDRA WEINREIS
MICHAEL WEIR
JAMIE WENSTROM
WAYNE WENSTROM
STACEY WESTPHAL
TERESA WETSCH
NORMA WHITE LIGHTNING
TINA M. WHITE MOUNTAIN
ALTHEA WHITE TEMPLE
KELLY WHITWORTH
DONESSA WICKER
JOVAN WICKER
JESSE WIEDRICH
JONATHON WILLIAMS
AMBER WILLIAMSON
KAYLA WILLIAMSON
VERIZON WIRELESS
WITE DEVELOPMENT LLC
JOYCE WOOD
WORLD LINK RADIO
JAMES E WRIGHT
JAMES S WRIGHT
CAMERON WYATT
SKYLER YANTZER
DANA YELLOW FAT
TERRIE YELLOW HAMMER
JACOB YONEY
JODY ZACHER
BRADY ZACHMANN
ANDREW J. ZACHMEIER
JEFF ZACHMEIER
DAROLD ZENKER
KEVIN ZIMAN
ROGER ZINS 



MOR-GRAN-SOU
ELECTRIC COOPERATIVE

MOR-GRAN-SOU ELECTRIC BOARD MEETING HIGHLIGHTS May 29

The board of directors meeting of Mor-Gran-Sou Electric Cooperative was held on May 29 at the Mandan Service Center in Mandan. Chair Steve Tomac called the meeting to order at 9:30 a.m. A quorum was present. Also present were Mor-Gran-Sou Electric co-General Managers/CEOs Travis Kupper and Jason Bentz, Chief Financial Officer Alex Craigmile, Manager of Operations Gary Fitterer, Member Services Manager Julie Armijo, Interim General Counsel Andrew Fergel and Administrative Assistant Samantha Fischer.

Consent agenda: The consent agenda was approved as presented.

Strategic agenda: Bentz and Kupper presented the co-general managers' report, which included updates on Basin Electric Power Cooperative, Western Area Power Administration and National Rural Electric Cooperative Association. Basin Electric's CEO report, West Dakota Utility Services and 3C Construction updates were available for review.

Action items: Action items were resolved.

Department reports: Craigmile provided a financial report. Fitterer reviewed the operations report, which included updates on the 2024 construction season. Armijo reviewed her member service report, which included annual meeting details and a Charitable Foundation board recap. Chief Information Officer Charlie Dunbar provided a written report for the board. Fergel provided a general counsel report on his projects.

Discussion/general information: The board discussed having a Bylaw Review Committee and upcoming meetings.

Executive session: The board entered an executive session.

The meeting concluded with the adjournment. Secretary-Treasurer Pam Geiger certified the accuracy of the minutes.

Next meeting date: The next meeting is at 9:30 a.m. Aug. 28 in Mandan.

Congratulations on your retirement!

Congratulations to **Tony Stegmiller**, facility technician, on his retirement after 21 years of service to our cooperative and membership. Best of luck on your future endeavors!



MOR-GRAN-SOU
ELECTRIC COOPERATIVE

202 6th Ave. W. - PO Box 297
Flasher, ND 58535-0297
Phone: 701- 597-3301 Flasher
701- 663-0297 Mandan
Toll-free: 800-750-8212 Fax: 701-597-3915
Email us: info@morgransou.com
UNDERGROUND LINE LOCATES
800-795-0555 OR 811

OFFICERS AND DIRECTORS

Chair.....Steve Tomac
Vice Chair.....Chad Harrison
Secretary-Treasurer..... Pam Geiger
Directors.....Mark Doll, Rodney Froelich,
Bob J. Leingang, Ryan Petrick,
Kathy Tokach, Casey Wells

MANAGEMENT

Co-GM/CEOTravis Kupper
Co-GM/CEO Jason Bentz

www.morgransou.com

Your Touchstone Energy® Cooperative

