

CURRENT NEWS



What's Happening



FEB. 13

Declaration of Candidacy forms due



FEB. 14

High school scholarship applications due



FEB. 28

Safety poster contest deadline



APRIL 25

North Dakota Career Tour applications due

We are now seeking youth to apply for the North Dakota Career Tour. Applications are due April 25.

In case you missed it...

Youth invited to apply for the North Dakota Career Tour

If you've ever been curious about what powers your world, this is your chance to explore. From coal mines and power plants to wind turbines and electric cooperatives, you'll get hands-on experiences and hear directly from the experts who drive North Dakota's energy sector. Learn more and apply on our website, morgransou.com/north-dakota-career-tour.

Director nominations open

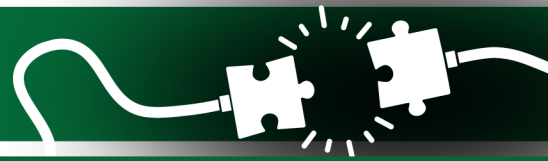
At the annual meeting on June 12 in Mandan, the following three board positions will be elected Grant County, Mandan Area and Morton County. For a person to be nominated, the member running for a board seat must submit the completed Declaration of Candidacy form to Mor-Gran-Sou Electric by 4 p.m. CT on Feb. 13.

Read these stories and more in this month's issue of *North Dakota Living*.

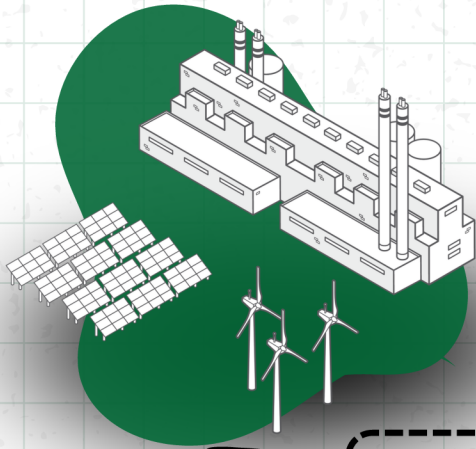


MOR-GRAN-SOU
ELECTRIC COOPERATIVE

CRITICAL CONNECTIONS



Here's how electricity gets to you ...



1

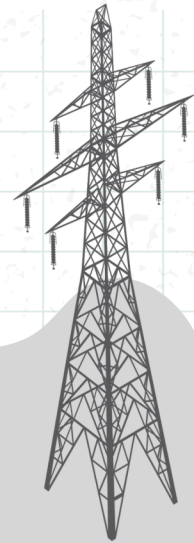
GENERATION

Power plants generate electricity from a variety of energy sources.

2

TRANSMISSION

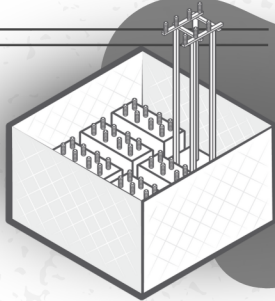
High-voltage electricity travels from power plants over long distances through transmission lines.



3

SUBSTATION

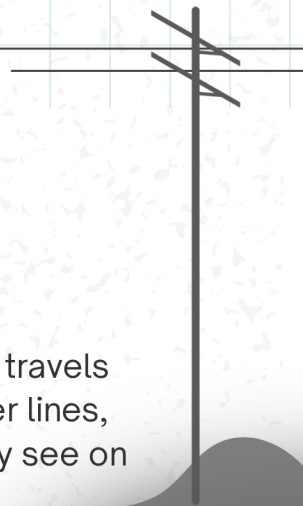
Electricity travels through a substation where the voltage is lowered.



4

DISTRIBUTION

Lower-voltage electricity travels through distribution power lines, like the ones you typically see on the side of the road.



5

TRANSFORMER

A transformer located on the ground or a utility pole reduces the electricity voltage a final time.



6

LAST STOP

Electricity arrives at your home, school or business and is ready for use.

